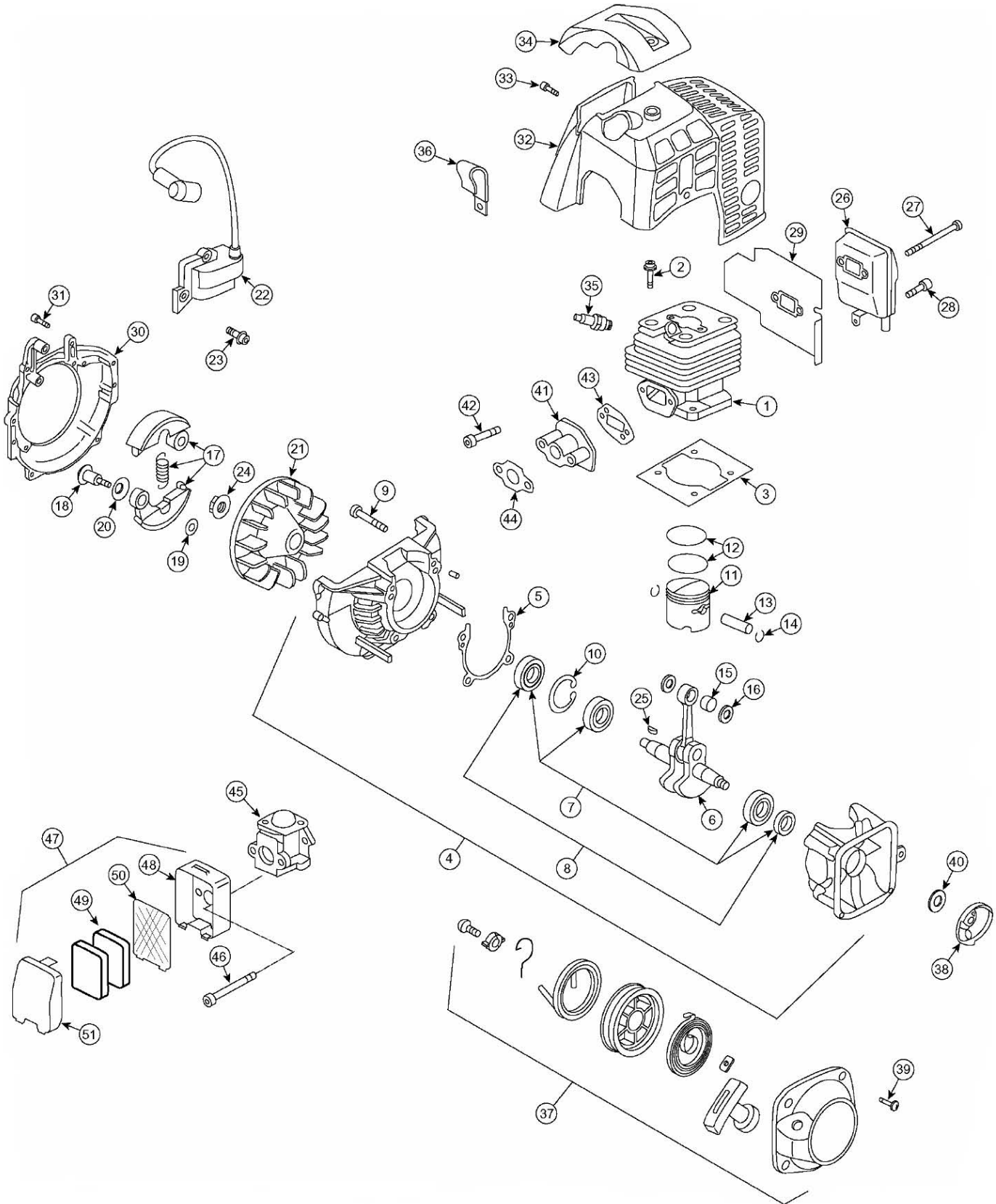


# G43L-D Engine Illustration



**5.1.11.5 Specifications and Technical Data**

Items	Unit	Specifications	Remarks
Overall Size (LxWxH)	In (mm)	6.34 x 10.75 x 8.03 (161 x 273 x 204)	
Weight	Lbs (kg)	6.61 (3.0)	
Engine Type		Two Stroke Cycle	
Clutch Type		Centrifugal	
Bore x Stroke	In (mm)	1.57 x 1.30 (40 x 33)	
Displacement	In <sup>3</sup> (cm <sup>3</sup> )	2.53 (41.5)	
Effective Compression Ratio		7.5	
Carburetor Type		Diaphragm	
Starting		Recoil Starter	
Ignition Type		CDI Control	
Spark Plug	Standard	BPMR7A	NGK
Spark Plug Gap	In (mm)	.023 ~ .027 (0.6 ~ 0.7)	
Rotor Gap	In (mm)	.013 (0.34)	
Rotating Direction		Counter Clockwise (PTO View)	
Clutch Engagement Speed	Rpm	3500	
No load max Speed	Rpm	12000	
Idling Speed	Rpm	2500	
Max. Power	Hp/rpm (kW/rpm)	1.97/7500 (1.47/7500)	After Full Break-in
Max. Torque	Lb ft/rpm (N.m/rpm)	1.66/5500 (2.25/5500)	
Fuel Consumption	g/kW h	612	
Mix Ratio		50:1	
Air Cleaner		Dry	

**5.1.11.6 Tightening Torque**

Items	Screw Size	Standard lb in (kg cm)	Limit lb in (kg cm)	Remarks
Carburetor	M5 (P=0.8)	30.4 (35)	26~34.7 (30~40)	
Insulator	M5 (P=0.8)	30.4 (35)	26~34.7 (30~40)	With Locktight glue
Clutch	M6 (P=1.0)	56.4 (65)	43.4~69.4 (50~80)	
Rotor	M8 (P=1.0)	113 (130)	86.8~130 (100~150)	
Cylinder	M5 (P=0.8)	60.8 (70)	52~69.4 (60~80)	
Crankcase	M5 (P=0.8)	56.4 (65)	43.4~69.4 (50~80)	
Spark Plug	M10 (P=1.0)	95.5 (110)	86.8~104 (100~120)	
Muffler	M5 (P=0.8)	78.1 (90)	60.8~86.8 (70~100)	
Fan Cover	M5 (P=0.8)	30.4 (35)	26~34.7 (30~40)	
Ignition Coil	M4 (P=0.7)	28.6 (33)	21.7~43.7 (25~40)	
Starter Case	M4 (P=0.7)	11.3 (13)	8.68~13 (10~15)	
Tapping Screw	TP 4.3	21.7 (25)	17.4~26 (20~30)	